

REQUEST FOR EXPRESSION OF INTEREST FOR PROVISION OF SADDLE BAGS

REFERENCE NO.: CPP-PROC-UG-073-0227

China Petroleum Pipeline Engineering Co., Ltd. (hereinafter abbreviated as CPP) as Pipeline, Feederline & Above Ground Installation Contractor for the East African Crude Oil Pipeline (EACOP) Project invites experienced and reputable Contractors to express their interest in providing **SADDLE BAGS** to the EACOP Project.

The EACOP Project involves the construction and operation of an underground and cross-border pipeline to transport crude oil for export to international markets. The pipeline will run from Kabaale, Hoima District in Uganda to the Chongoleani peninsula near Tanga in Tanzania. The length of the pipeline is 1,443 km, of which 296 km will be in Uganda.

BRIEF DESCRIPTION OF THE SCOPE OF THE SERVICES:

- ♦ Saddle bags and strap materials shall be polypropylene fabric and be resistant to common soil chemicals, rot, insect and fungal attack.
- ♦ Density of crushed stone for saddle bags – 1700 kg/m³
- ♦ Min. weight of saddle bag – 3825 kg for 30”
- ♦ Volume of saddle bag – 2.1m³ for 30”.
- ♦ Typical drawing for saddle bags ref to Appendix 4

Estimated Quantity: 1050 pcs for Feederline + 7462 pcs for LOT 1 = 8512 pcs

MINIMUM REQUIREMENTS:

Companies or organizations expressing their interest are invited to document their request with:

- Proof of business registration and business license for Uganda.
- Proof of registration with the Uganda Tax Revenue Authority.
- Proof of registration with the National Supplier Database (NSD) for Uganda.
- Compliance with the Petroleum Midstream National Content Regulation # 34,2016 for Uganda.
- Uganda Registration Service Bureau (URSB) Annual returns of the latest year.
- Fully filled Key personnel list with CV (Appendix 1) and Equipment list of production and inspection (Appendix 2) in requested format. (Blank is regarded as an unqualified item.)
- Similar supplying experience within the last three years (Appendix 3) in the requested format.
- Copy of certificates of ISO 9001, ISO 45001, ISO 14001, or equivalent of them.
- Tax Clearance Certificate for the latest year available.

Companies which have the ability, capacity, and resources to implement the activities listed above should express their interest by sending together with the documents stated in the above section through an email to supplierdata@cpptz.com (Max. Email Size: 20 MBs, all documents must be submitted in the English language) on or before 24:00 hours East African Time (EAT), on 28th March 2024.. The subject of the email should be **“EOI for CPP-PROC-UG-073-0227-COMPANY NAME”**. CPP reserves the right not to consider companies that submit an incorrect email subject and the incorrect format of Questionnaire, Appendix 1, 2 and 3.

The format of the required documents and relevant technical requirements which are mentioned in Minimum



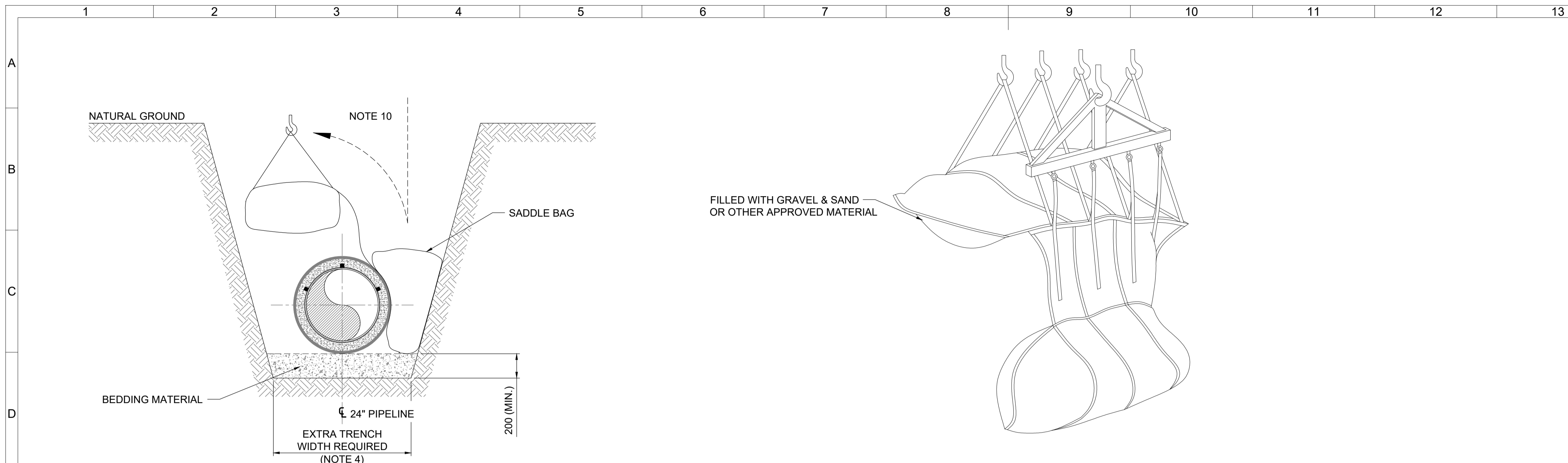
EAST AFRICAN
CRUDE OIL
PIPELINE



Requirements should be **downloaded from EACOP's website**

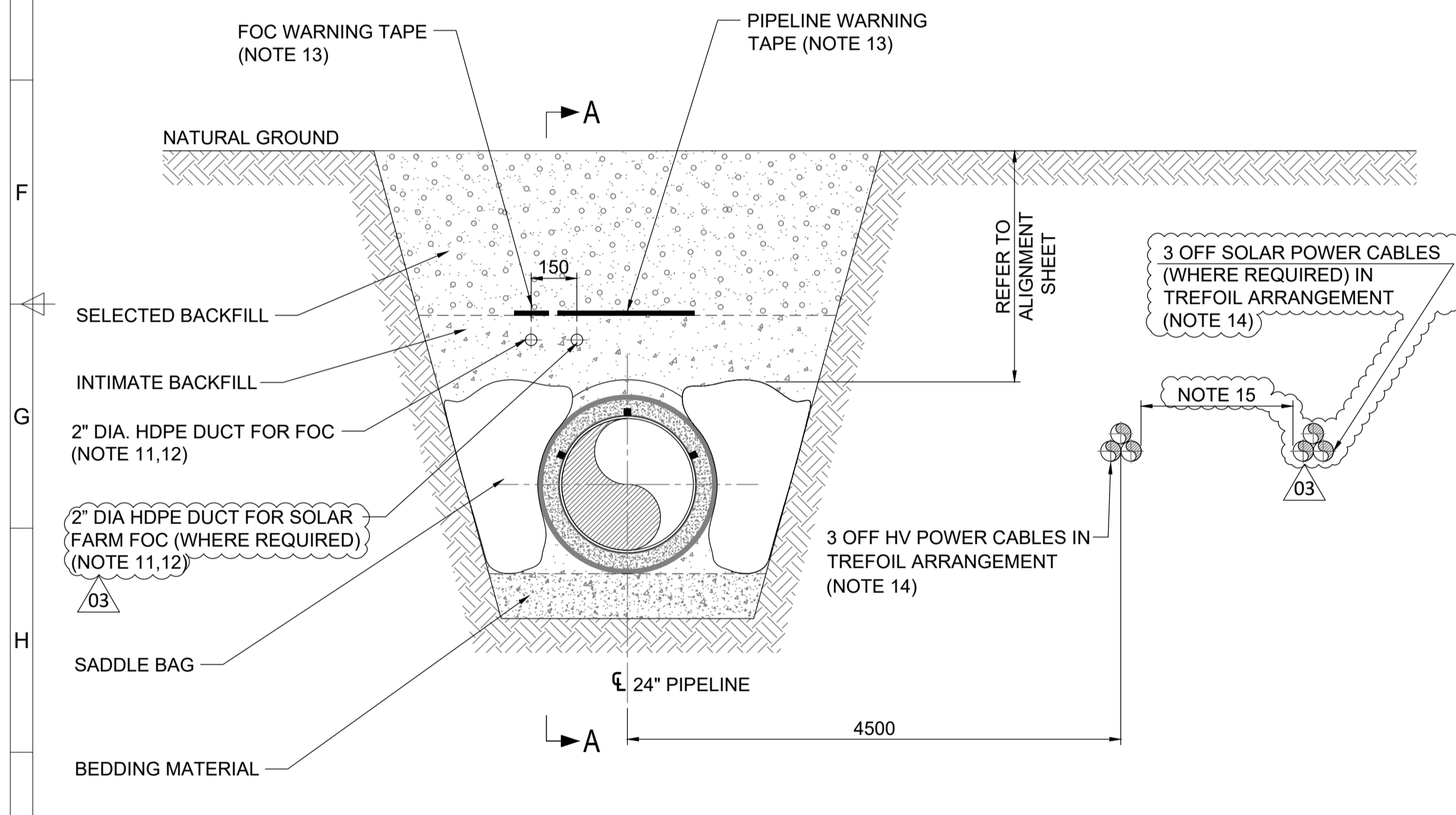
(<https://eacop.com/opportunities-by-main-construction-contractors/china-petroleum-pipeline-engineering-co-ltd/>).

Note: CPP will review and assess the documents provided by companies that have expressed interest in accordance with this EOI and conduct evaluations based on internal criteria to determine which companies will be included in the list of pre-qualified companies. Only the pre-qualified companies will receive, by signing a Non-Disclosure Agreement (NDA), an invitation to bid as a continuation of the call for tender process. CPP reserves the right at its sole discretion to make the decision to select or reject a company and maintain its decision.

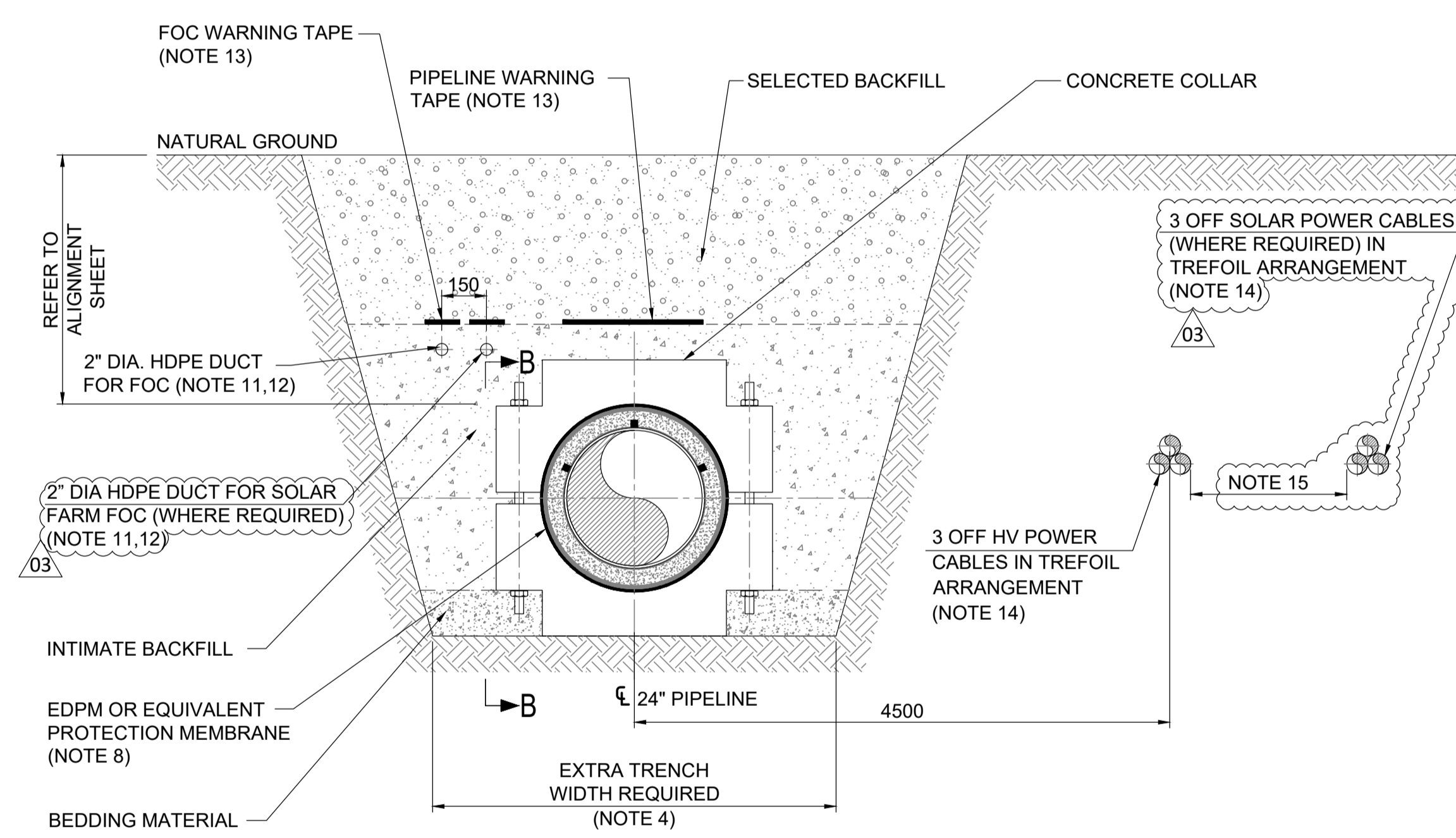


SADDLE BAGS INSTALLATION METHOD

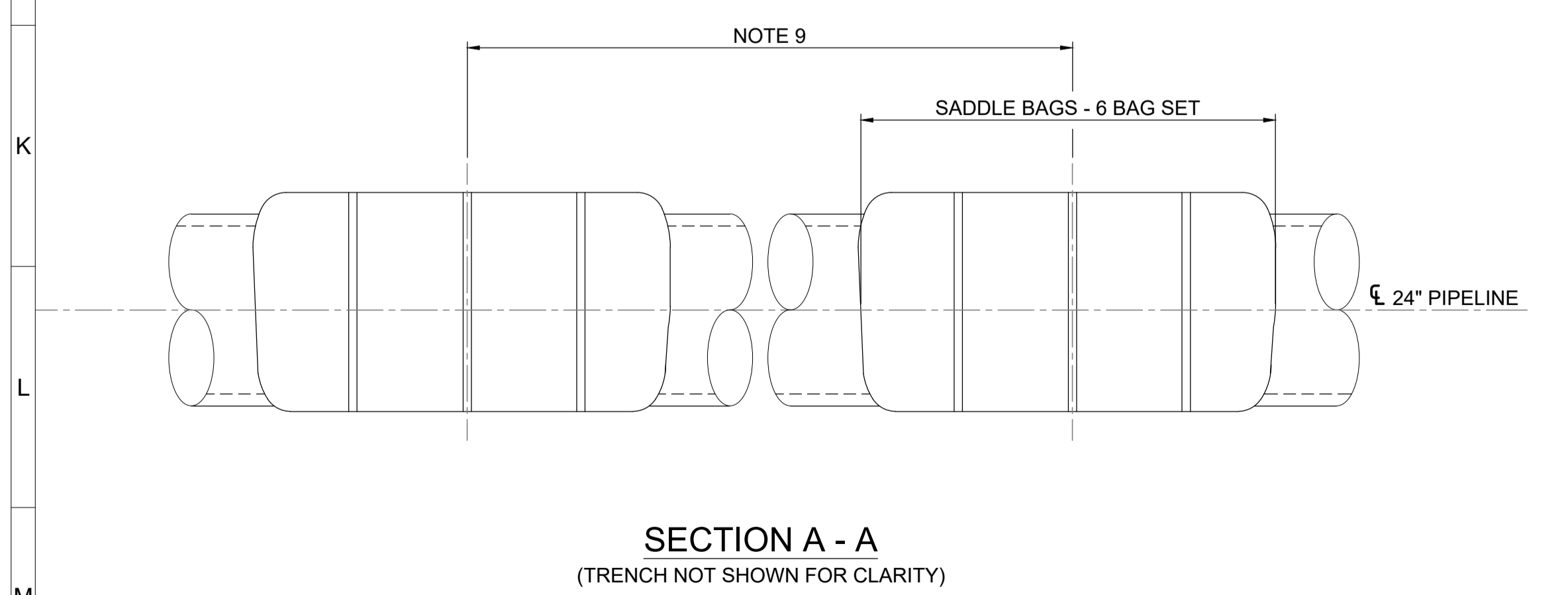
GENERAL ARRANGEMENT OF SADDLE BAGS



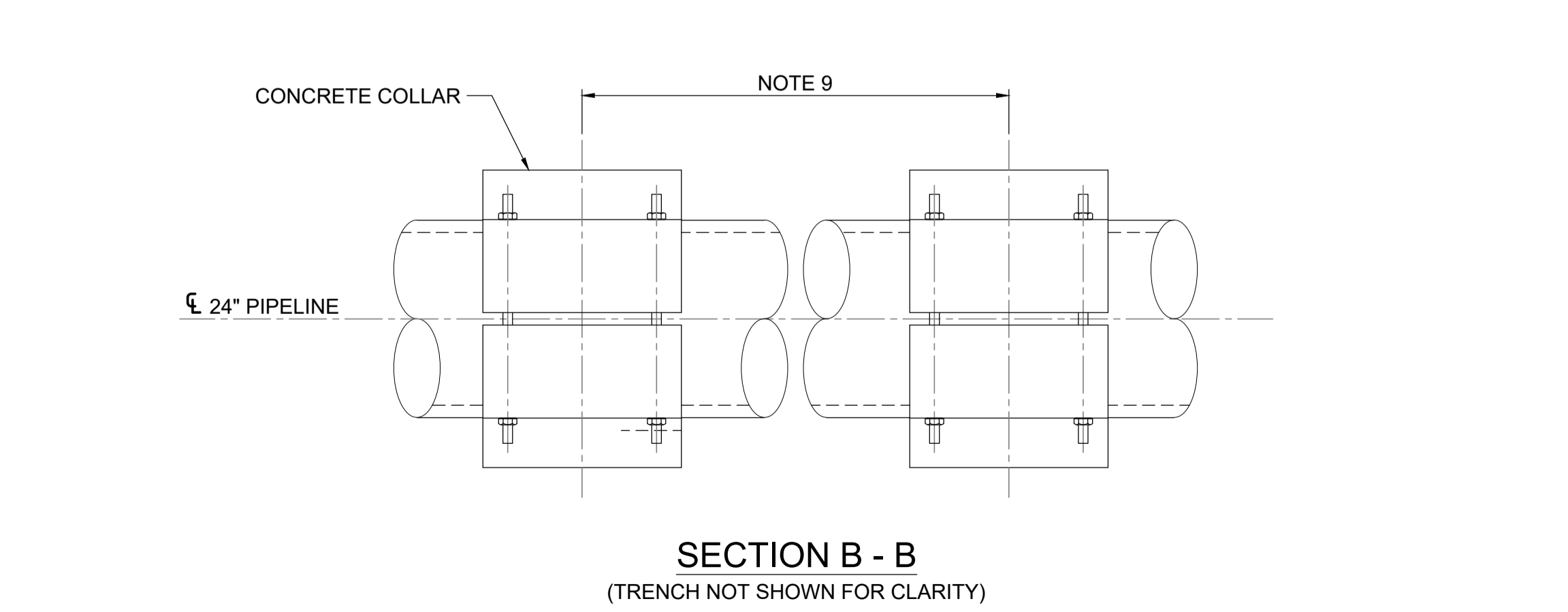
SADDLE BAGS - COMPLETED TRENCH DETAIL



CONCRETE COLLAR DETAIL



**SECTION A - A
(TRENCH NOT SHOWN FOR CLARITY)**



**SECTION B - B
(TRENCH NOT SHOWN FOR CLARITY)**

- GENERAL NOTES:**
- ALL DIMENSIONS ARE IN MILLIMETRES UNLESS NOTED OTHERWISE.
 - THIS DRAWING SHALL BE READ IN CONJUNCTION WITH THE PIPELINE CONSTRUCTION SPECIFICATION, DOC. NO. UT-MID-70-WPR2-190010.
 - THIS TYPICAL DETAIL APPLIES TO THE FEEDER LINE AND PIPELINE.
 - FOR TRENCH DETAILS, REFER TO TYPICAL TRENCH DRAWING NO. UT-MID-70-WPR2-191500. THE TRENCH WIDTH SHALL BE INCREASED WHERE NECESSARY TO FACILITATE INSTALLATION OF THE SADDLE BAGS OR CONCRETE COLLARS.
 - PIPELINE CONTRACTOR SHALL SUBMIT A BUOYANCY MITIGATION PLAN FOR COMPANY APPROVAL. WHERE THERE IS A RISK OF BUOYANCY, SADDLE BAGS OR CONCRETE COLLARS SHALL BE USED WHERE NECESSARY TO COMPLY WITH THE BUOYANCY MITIGATION MEASURES REQUIRED BY UT-MID-70-WPR2-190072. ALTERNATIVELY, SCREW ANCHORS OR CONCRETE COATING MAY BE USED IN ACCORDANCE WITH UT-MID-70-WPR2-191523 & UT-MID-70-WPR2-191526.
 - SADDLE BAGS OR CONCRETE COLLARS SHALL NOT BE USED IN AREAS WHERE THERE IS A POTENTIAL FOR LIQUEFACTION OF THE GROUND.
 - SADDLE BAG AND STRAP MATERIALS SHALL BE POLYPROPYLENE FABRIC AND BE RESISTANT TO COMMON SOIL CHEMICALS, ROT, INSECT AND FUNGAL ATTACK. ALL MATERIALS USED SHALL BE SUITABLE FOR THE DESIGN LIFE OF THE PIPELINE. BALLAST FILLING, WEIGHT MEASUREMENT, HANDLING, TRANSPORTATION AND SUBSEQUENT SEALING OF SADDLE BAGS SHALL BE IN ACCORDANCE WITH THE MANUFACTURER'S RECOMMENDATION.
 - DURING INSTALLATION OF THE BAGS OR COLLARS, CARE SHALL BE TAKEN TO AVOID DAMAGE TO THE HDPE JACKET. EPDM OR OTHER SUITABLE LAYER THAT PREVENTS DAMAGE TO THE HDPE JACKET SHALL BE INSTALLED PRIOR TO ATTACHING THE CONCRETE COLLARS.
 - PIPELINE CONTRACTOR SHALL IDENTIFY THE SEPARATION REQUIRED BETWEEN THE BAGS AND COLLARS. THEY SHALL BE LOCATED AS FAR FROM THE FIELD JOINTS AS POSSIBLE CONSIDERING THE REQUIRED SPACING AND A MINIMUM OF 3M FROM THE JOINTS.
 - SADDLE BAGS SHALL BE LIFTED INTO POSITION USING SUITABLE EQUIPMENT TO ALLOW RELEASE WITHOUT PERSONNEL BEING ON THE PIPE OR IN THE TRENCH.
 - FOR FOC INSTALLATION DETAILS, REFER TO DOC. NO. UT-MID-70-WPR2-170001.
 - INSTALLATION OF A DUCT FOR THE FOC IS ONLY REQUIRED WHERE THE FOC IS NOT INSTALLED AT THE SAME TIME AS THE PIPELINE. WHERE DUCTS ARE USED THEY SHALL BE INSTALLED ALONG THE ENTIRE LENGTH OF THE SECTION REQUIRING BUOYANCY CONTROL. THEY SHALL FOLLOW THE PIPELINE PROFILE AND SHALL TERMINATE AT THE LOCATION WHERE THE PIPELINE IS INSTALLED AT STANDARD COVER ON EITHER SIDE OF THE SECTION.
 - FOR DETAILS OF WARNING TAPES REFER TO DRAWING NO. UG-UTP-72-WPR2-191501, TZ-UTP-72-WPR2-191501 AND UG-TIF-71-WPR2-191502.
 - FOR HV CABLE INSTALLATION DETAILS REFER TO DOC. NO. UT-MID-70-WPR2-150001.
 - MINIMUM SEPARATION DISTANCE BETWEEN HV CABLES AND SOLAR CABLES SHALL BE AS PER TYPICAL ELECTRICAL DETAIL UT-MID-70-WPR2-151500.

REFERENCE:

| DOCUMENT NUMBER | DOCUMENT TITLE |
|-----------------------|--|
| UT-MID-70-WPR2-190010 | SPECIFICATION FOR PIPELINE CONSTRUCTION |
| UT-MID-70-WPR2-191500 | TYPICAL PIPELINE DETAILS - TRENCH CROSS SECTION |
| UT-MID-70-WPR2-151500 | TYPICAL ELECTRICAL DETAIL - HV CABLE INSTALLATION CROSS SECTION |
| UT-MID-70-WPR2-190072 | PIPELINE BUOYANCY ASSESSMENT AND MITIGATION MEASURES REPORT |
| UT-MID-70-WPR2-191523 | TYPICAL PIPELINE DETAILS - CONCRETE COATED PIPE |
| UT-MID-70-WPR2-191526 | TYPICAL PIPELINE DETAILS - SCREW ANCHOR DETAIL |
| UG-TIF-71-WPR2-191502 | TYPICAL PIPELINE DETAILS - FEEDERLINE AND CABLE WARNING TAPES |
| UG-UTP-72-WPR2-191501 | TYPICAL PIPELINE DETAILS - PIPELINE AND CABLE WARNING TAPES (UGANDA) |
| TZ-UTP-72-WPR2-191501 | TYPICAL PIPELINE DETAILS - PIPELINE AND CABLE WARNING TAPES (TANZANIA) |
| UT-MID-70-WPR2-150001 | HV CABLE INSTALLATION SPECIFICATION |
| UT-MID-70-WPR2-170001 | FIBRE OPTIC CABLE INSTALLATION AND ACCESSORIES GUIDELINE |

| Rev. | Date | Step | Revision Description | Iss. | Check. | Appr. |
|------|-------------|------|---------------------------|------|--------|-------|
| 03 | 14/Jun/2023 | AFC | APPROVED FOR CONSTRUCTION | NMN | JHY | MJD |
| 02 | 03/Nov/2021 | AFC | APPROVED FOR CONSTRUCTION | NMN | JHY | MJD |
| 01 | 04/Jun/2021 | AFC | APPROVED FOR CONSTRUCTION | NMN | JHY | MJD |
| 00 | 03/Sep/2019 | IFR | ISSUED FOR REVIEW | KRU | DDE | JCN |

FAST AFRICAN CRUDE OIL PIPELINE **EACOP Project** **Worley**
energy | chemicals | resources

This document is the property of the COMPANY and it shall not be disclosed to third parties or reproduced without the express written permission of the COMPANY. This document has been generated by an Electronic Document Management System. When printed it shall be considered as "for information only". The controlled copy is the EDMS version and it is document holder's responsibility to make sure that latest version is in use.

Affiliate: Site: MID Project Phase: DE

**TYPICAL PIPELINE DETAILS
CONCRETE COLLARS AND SADDLE BAGS
FOR BUOYANCY CONTROL**

| | | | | | | | |
|---------------------|-----------------------|------------|---------|---------|--------|---------|----|
| Discipline: | PLR | Doc. Type: | TYP | Sector: | 70 | System: | 23 |
| Company Doc. N°: | UT-MID-70-WPR2-191527 | | Class: | 2 | Scale: | NTS. | |
| Contractor Doc. N°: | | | Format: | A1 | Folio: | 1 of 1 | |