

REQUEST FOR EXPRESSION OF INTEREST FOR PROVISION OF CONCRETE SLAB FOR MECHANICAL PROTECTION
REFERENCE NO.: CPP-PROC-UG-072-0215-C2

China Petroleum Pipeline Engineering Co., Ltd. (hereinafter abbreviated as CPP) as Pipeline, Feederline & Above Ground Installation Contractor for the East African Crude Oil Pipeline (EACOP) Project invites experienced and reputable Contractors to express their interest in providing **concrete slab mechanical protection** to the EACOP Project.

The EACOP Project involves the construction and operation of an underground and cross-border pipeline to transport crude oil for export to international markets. The pipeline will run from Kabaale, Hoima District in Uganda to the Chongoleani peninsula near Tanga in Tanzania. The length of the pipeline is 1,443 km, of which 296 km will be in Uganda.

BRIEF DESCRIPTION OF THE SCOPE OF THE SERVICES:

- ♦ Concrete slab for mechanical protection (Details refer to 3Appendix 4)
- ♦ 2NO.HALFEN DEHA KKT Spherical head lifting anchor lifting system provided by CPP

MINIMUM REQUIREMENTS:

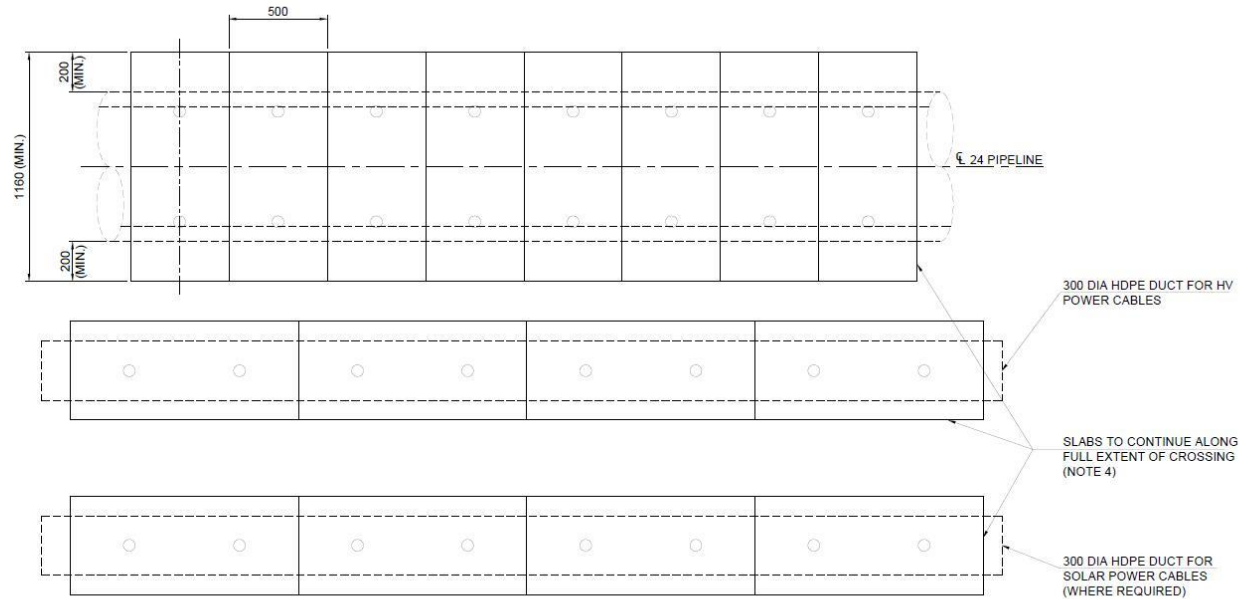
Companies or organizations expressing their interest are invited to document their request with:

- Proof of business registration and business license for Uganda.
- Proof of registration with the Uganda Tax Revenue Authority.
- Proof of registration with the National Supplier Database (NSD) for Uganda.
- Compliance with the Petroleum Midstream National Content Regulation # 34,2016 for Uganda.
- Uganda Registration Service Bureau (URSB) Annual returns of the latest year.
- Fully filled Key personnel list with CV (Appendix 1) and Equipment list of production and inspection (Appendix 2) in requested format. (Blank is regarded as an unqualified item.)
- Similar supplying experience within the last three years (Appendix 3) in the requested format.
- Copy of certificates of ISO 9001, ISO 45001, ISO 14001, or equivalent of them.
- Tax Clearance Certificate for the latest year available.
- Provide ESIA evaluation certificate (Failure to provide will be considered unqualified) .

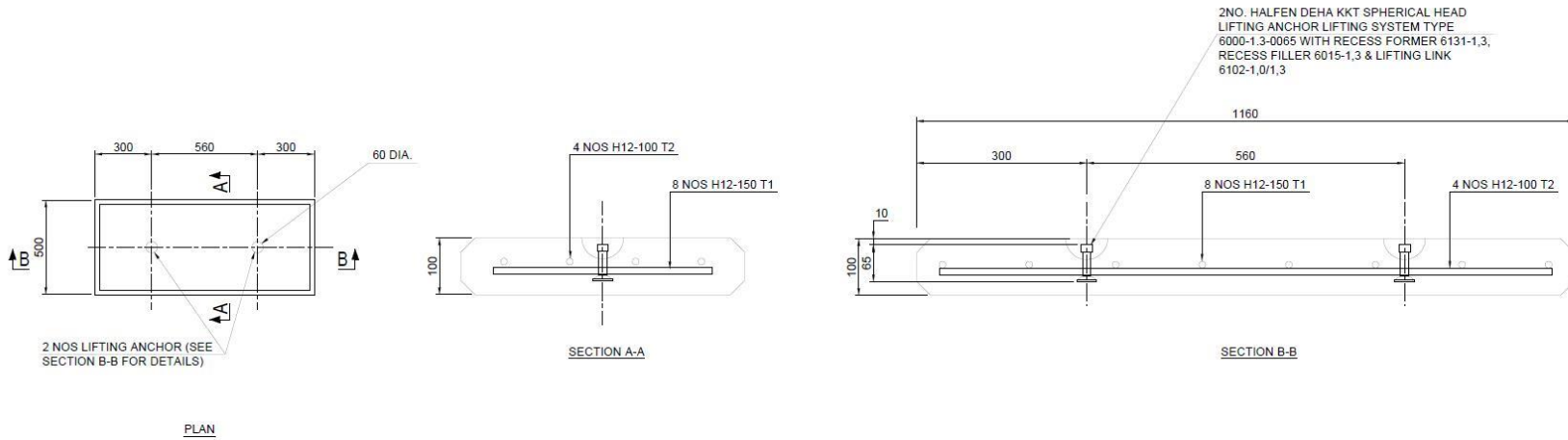
Companies which have the ability, capacity, and resources to implement the activities listed above should express their interest by sending together with the documents stated in the above section through an email to **supplierdata@cpptz.com** (Max. Email Size: 20 MBs, all documents must be submitted in the English language) on or before **24:00 hours East African Time (EAT), on 15 March 2024. The subject of the email should be "EOI for CPP-PROC-UG-072-0215-C2-COMPANY NAME". CPP reserves the right not to consider companies that submit an incorrect email subject and the incorrect format of Questionnaire, Appendix 1, 2 and 3.**

The **format** of the required documents and **relevant technical requirements** which are mentioned in Minimum Requirements should be **downloaded from EACOP's website (<https://eacop.com/opportunities-by-main-construction-contractors/china-petroleum-pipeline-engineering-co-ltd/>).**

Note: CPP will review and assess the documents provided by companies that have expressed interest in accordance with this EOI and conduct evaluations based on internal criteria to determine which companies will be included in the list of pre-qualified companies. Only the pre-qualified companies will receive, by signing a Non-Disclosure Agreement (NDA), an invitation to bid as a continuation of the call for tender process. CPP reserves the right at its sole discretion to make the decision to select or reject a company and maintain its decision.



CONCRETE SLAB INSTALLATION



CONCRETE SLAB DETAILS

GENERAL NOTES:

1. ALL DIMENSIONS ARE IN MILLIMETRES UNLESS NOTED OTHERWISE.
2. THIS DRAWING SHALL BE READ IN CONJUNCTION WITH THE PIPELINE CONSTRUCTION SPECIFICATION, DOC. NO. UT-MID-70-WPR2-190010.
3. THIS TYPICAL DETAIL APPLIES TO THE FEEDER LINE AND PIPELINE.
4. FOR SLAB INSTALLATION DETAILS REFER TO UT-MID-70-WPR2-191510 AND UT-MID-70-WPR2-191508.
5. PRE-CAST UNITS SHALL BE USED WHEREVER POSSIBLE AND ONLY BE INSTALLED FOLLOWING A MINIMUM CURING TIME OF 28 DAYS.
6. CONCRETE SLABS SHALL BE FABRICATED USING CONCRETE GRADE C30/37 IN ACCORDANCE WITH DOC NO. UT-MID-60-WPR2-230006.
7. REFER TO UT-MID-60-WPR2-231500 FOR TYPICAL CONCRETE GENERAL NOTES, ABBREVIATIONS AND LEGEND.
8. STEEL REINFORCEMENT SHALL BE RIBBED, HIGH YIELD (CHARACTERISTIC YIELD STRENGTH = 500 N/mm²) STEEL BAR CONFORMING TO BS EN 10080 OR BS 4449:2005
9. REINFORCEMENT SHALL BE SCHEDULED, DIMENSIONED, BENT AND CUT IN ACCORDANCE WITH BS 8666:2005.
10. MINIMUM LAP LENGTH FOR H12 SHALL BE 570mm.
11. MINIMUM CONCRETE COVER TO REINFORCEMENT SHALL BE 40mm.
12. HALFEN LIFTING LUGS TO BE INSTALLED AS PER MANUFACTURERS SPECIFICATION & INSTRUCTIONS.
13. PIPELINE CONTRACTOR SHALL VERIFY AND ENSURE LIFTING DESIGN CORRESPONDS TO THE ACTUAL HANDLING SITUATIONS. HANDLING PROCEDURES SHALL BE IN ACCORDANCE WITH BS EN 13670.
14. PIPELINE CONTRACTOR'S INSPECTION REGIME SHALL INCLUDE CHECKS FOR ANY SIGNS OF CRACKING, DISTORTION AND / OR DAMAGE OF LIFT POINTS.
15. THE SLABS AND LIFTING ANCHOR ARE INTENDED FOR INITIAL INSTALLATION ONLY. IF THE SLABS NEED TO BE REMOVED AT A FUTURE DATE (FOR EXAMPLE TO ENABLE ACCESS TO THE PIPELINE OR CABLES FOR REPAIR), THE CONDITION OF THE SLABS AND ANCHOR SHALL BE ASSESSED AND SUITABLE METHODS USED FOR REMOVAL.
16. PIPELINE CONTRACTOR SHALL PERFORM A PROOF LOAD TEST ON ONE SLAB FROM

EACH BATCH OF SLABS TO SHOW THAT THE SLABS AND LIFTING ANCHOR ARE OF SUFFICIENT STRENGTH FOR SAFE LIFTING. TEST SHALL BE PERFORMED IN ACCORDANCE WITH PD CEN/TR 15728, WITH SERVICE LOAD OF 6.0kN PER LIFTING ANCHOR, AT AN ANGLE OF 60° FROM CONCRETE SURFACE.