

**REQUEST FOR EXPRESSION OF INTEREST FOR PROVISION OF ANCHOR BOLTS FOR ABOVE GROUND
INSTALLATION (AGI)**

REFERENCE NO.: CPP-PROC-TZ-070-1214

China Petroleum Pipeline Engineering Co., Ltd. (hereinafter abbreviated as CPP) as Pipeline, Feederline & Above Ground Installation Contractor for the East African Crude Oil Pipeline (EACOP) Project invites experienced and reputable Contractors to express their interest in providing [**Anchor Bolts for AGI**] to the EACOP Project.

The EACOP Project involves the construction and operation of an underground and cross-border pipeline to transport crude oil for export to international markets. The pipeline will run from Kabaale, Hoima District in Uganda to the Chongoleani peninsula near Tanga in Tanzania. The length of the pipeline is 1,443 km, of which 1,147 km will be in Tanzania.

BRIEF DESCRIPTION OF THE SCOPE OF THE SERVICES:

- ♦ **Anchor Bolts** (including Bolts, nuts, gaskets)

MINIMUM REQUIREMENTS:

Companies or organizations expressing their interest are invited to document their request with:

- Proof of business registration and business license for Tanzania and Profile of Supplier.
- Proof of registration with the Tanzania Tax Revenue Authority, including TIN Certificate.
- Proof of registration/application to the EWURA Local Supplier Service Provider(LSSP) data base at the time of submission of the response to this expression of interest is strongly recommended.
- Compliance with Petroleum (Local Content) Regulations, 2017 and Local Company definition for Tanzania.
- Filling the Key personnel list with CV(Appendix1) and Equipment list of production and inspection (Appendix2) in requested format.
- Please provide similar experience within last three years (relevant supply contracts, acceptance reports and other supporting documents should be attached), the experience shall include at least one experience of Anchor Bolts. Format refer to Appendix 3.
- Copy of certificates of ISO 9001, ISO 45001, ISO 14001 or equivalent of them.
- Tax Clearance Certificate for the latest year available and Audit report for the last three years.
- Technical requirements shall meet our relevant technical requirements documents refer to Appendix 4. (Supplier's response shall be included in their documents submitted)

Companies which have the ability, capacity, and resources to implement the activities listed above should express their interest by sending together with the documents stated in the above section through an email to **supplierdata1@cpptz.com (Max. Email Size: 20 MBs, all documents must be submitted in the English language)** on or before **24:00 hours East African Time (EAT), on 29th December 2023. The subject of the email should be "EOI for CPP-PROC-TZ-070-1214-COMPANY NAME". CPP reserves the right not to consider companies that submit an incorrect email subject and the incorrect format of Appendix 1, 2 and 3.**

The **format** of the required documents and **relevant technical requirements** which are mentioned in Minimum Requirements should be **downloaded from EACOP's website**

(<https://eacop.com/opportunities-by-main-construction-contractors/china-petroleum-pipeline-engineering-co-ltd/>).

Note: CPP will review and assess the documents provided by companies that have expressed interest in accordance with this EOI and conduct evaluations based on internal criteria to determine which companies will be included in the list of pre-qualified companies. Only the pre-qualified companies will receive, by signing a Non-Disclosure Agreement (NDA), an invitation to bid as a continuation of the call for tender process. CPP reserves the right at its sole discretion to make the decision.

APPENDIX 1 List of the Key Personnel

No.	Title	Name	Years of Experience	Qualification Certificates		Location	Notes
				Name of the Certificate	Certificate No.		

Notes: pls attach the CV & scanned copies of certificates etc.

APPENDIX 2 List of Main Equipment

No.	Name of Main Equipment	Brand & Model	Qty.	Status of Equipment	Self-owned (Y/N)	Location of Equipment	Date of Production	Notes

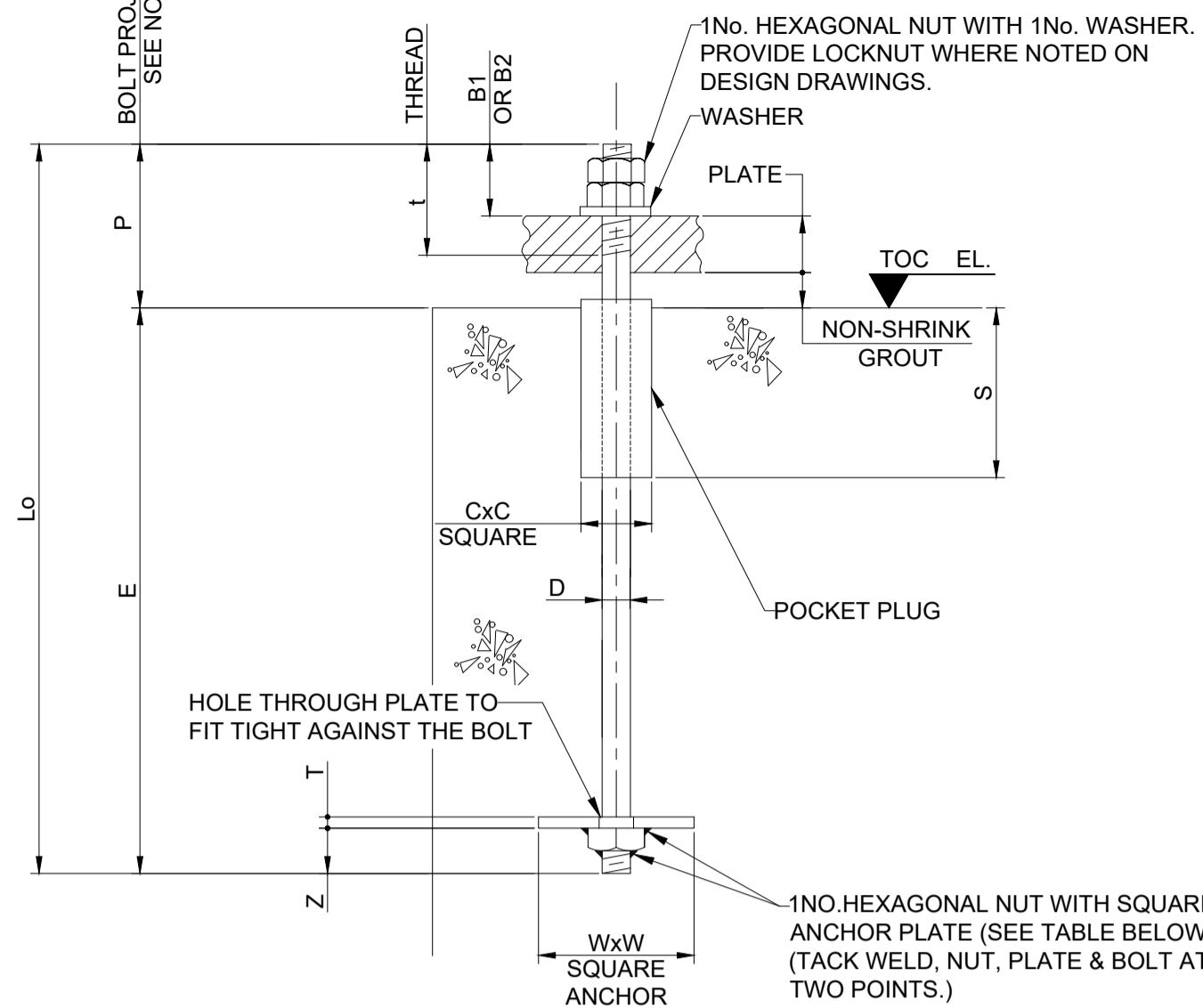
Notes: pls attach photos and self-owned certificate etc.

APPENDIX 3 List of similar supplying experience

Client	Contact Information of Client (Email/Phone number)	Location	Years	Name of the Project	Scope of Work	Status of the Project (Completed / Ongoing)	Bidder's Contract Value	Notes

Notes:

1. Please attach following documents: scanned CONTRACT for completed project or LETTER of AWARD for ongoing projects, completion certificate (if any), appreciation letters (if any) etc.
2. The information of the PROJECT mentioned above may be confirmed by CPP with the assistance of EACOP COMPANY.



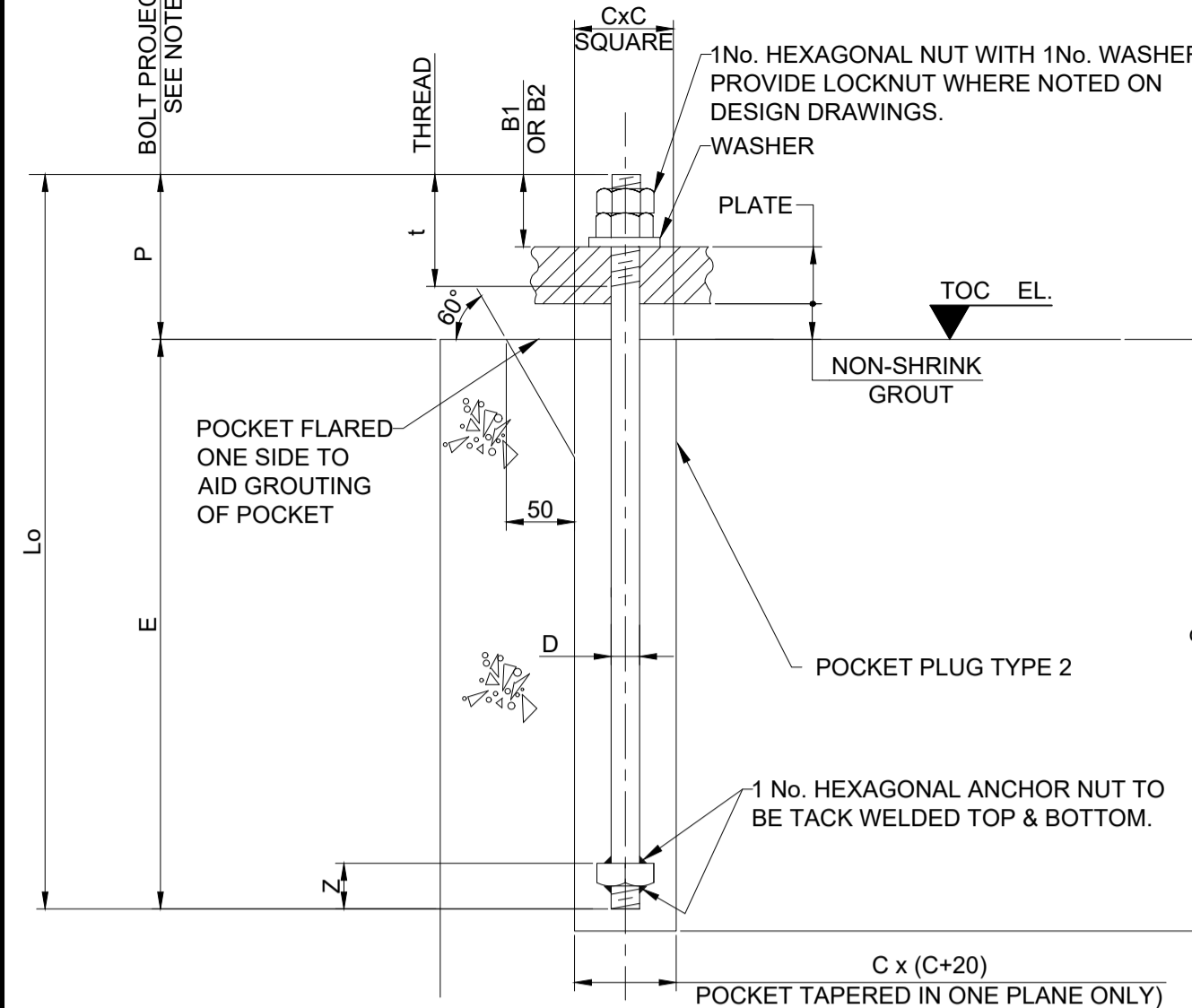
TYPE 1

BOLT TYPE 1	BOLT DIMENSIONS								POCKET DIMENSIONS		ANCHOR PLATE DIMENSIONS	
	BOLT DIA (mm) (D)	EMBEDMENT (E)	BOLT LENGTH (Lo) (*)	THREAD (Z)	(t)	(B1) 1 NUT	(B2) 1 NUT & 1 LOCK NUT	MAX BASE PLATE THICKNESS (mm)	(C)	(S)	(W)	(T)
M16	16	350	450	25	80	25	40	20	75	200	60	20
M20	20	400	525	30	90	30	50	25	75	200	65	20
M24	24	450	600	35	115	35	60	30	75	250	70	20
M30	30	575	725	45	120	40	65	35	75	250	85	25
M36	36	650	825	55	140	50	80	40	100	300	105	25
M42	42	750	925	65	145	60	95	40	100	300	140	30

(*) BOLT LENGTHS (Lo) ARE STANDARD UNLESS OTHERWISE NOTED ON CONCRETE DETAIL DRAWINGS

BOLT PROJECTION = GROUT THICKNESS + PLATE THICKNESS + B1 or B2 (SEE NOTE 9)

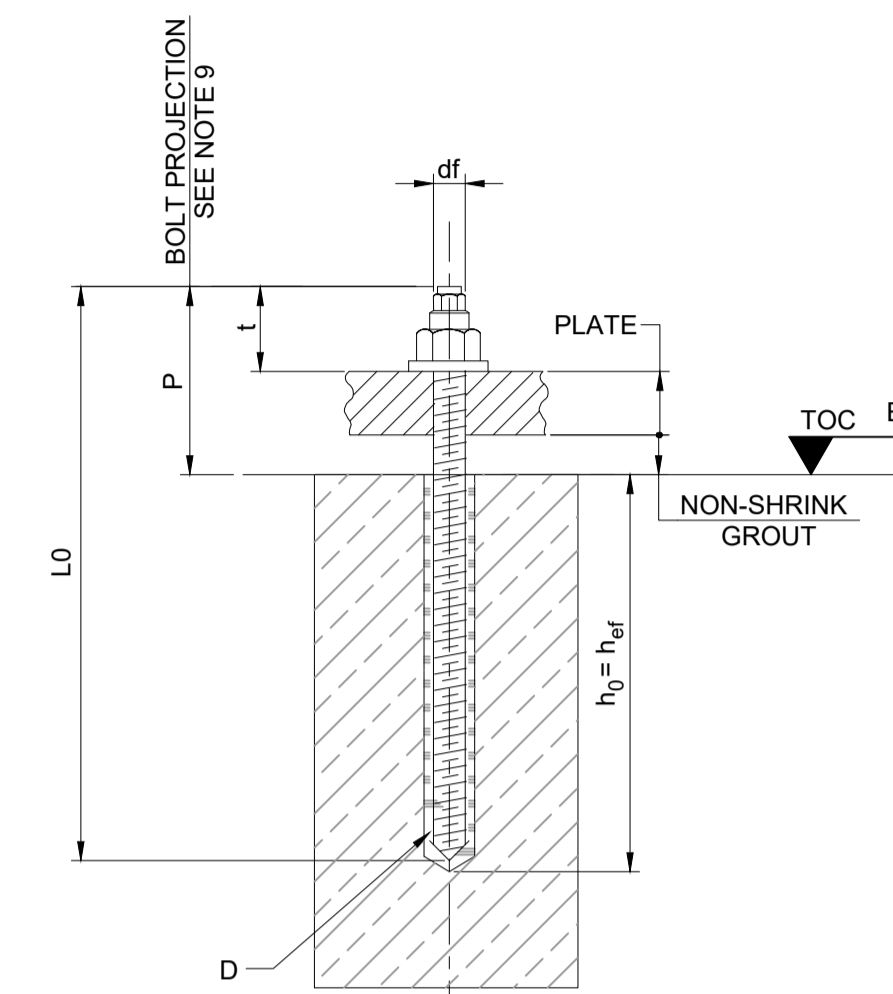
BOLT LENGTH (Lo) AND THREAD (t) ARE SUITABLE FOR GROUT THICKNESS UPTO 40mm



TYPE 2

BOLT TYPE 2 (**)	BOLT DIMENSIONS								POCKET DIMENSIONS	
	BOLT DIA (mm) (D)	EMBEDMENT (E)	BOLT LENGTH (Lo) (Z)	THREAD (t)	(B1) 1 NUT	(B2) 1 NUT & 1 LOCK NUT	MAX BASE PLATE THICKNESS (mm)	(C)	(S)	
M12	12	275	375	25	75	20	35	20	100	300
M16	16	275	400	25	90	25	40	20	100	300

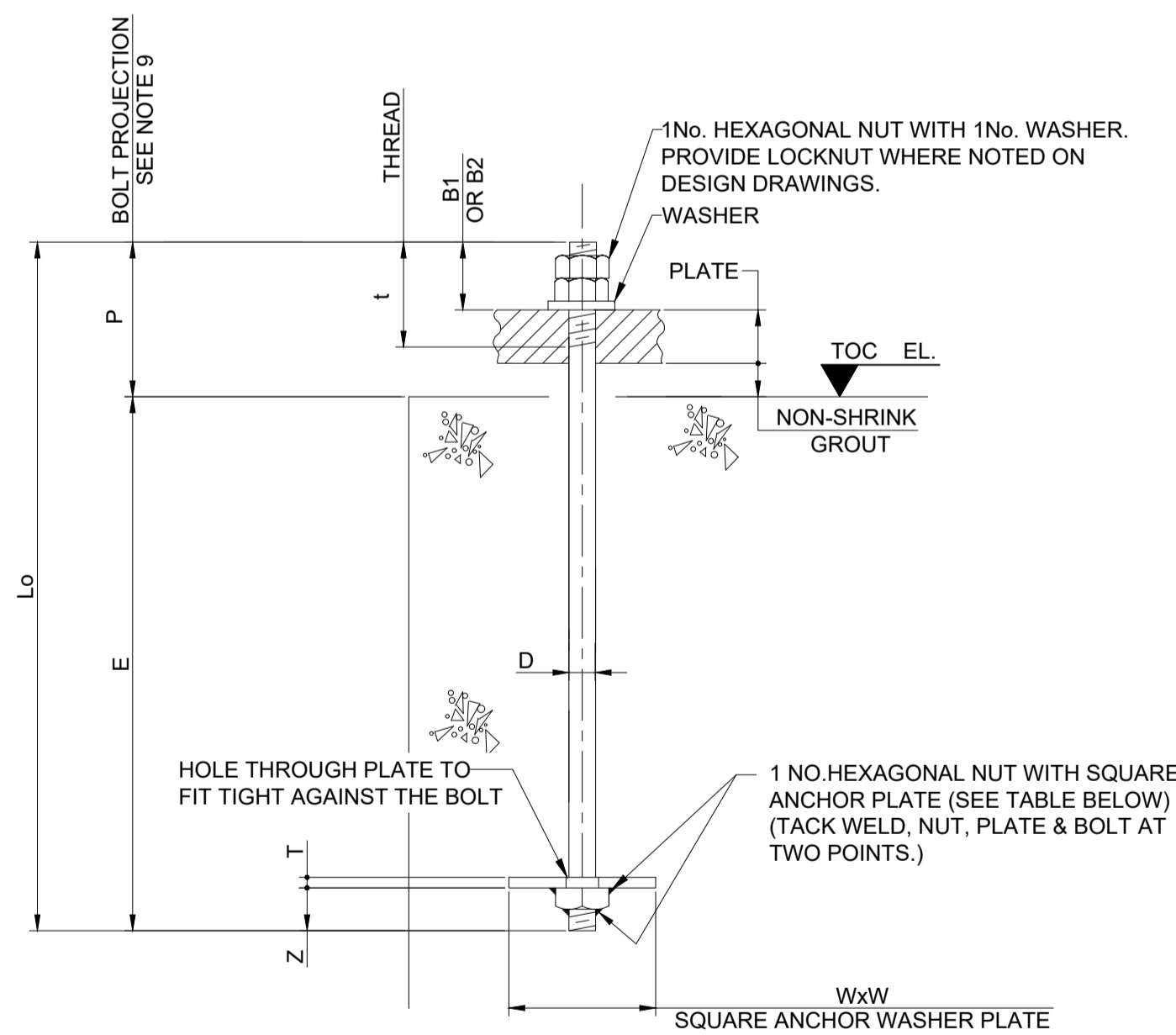
(**) TYPE 2 HOLDING DOWN BOLTS SHALL BE USED FOR STRUCTURES AND EQUIPMENT NOT SUBJECT TO SIGNIFICANT TENSION LOADS
BOLT LENGTH (Lo) AND THREAD (t) ARE SUITABLE FOR GROUT THICKNESS UPTO 40mm



TYPE 3

BOLT TYPE 3 POST DRILLED ANCHOR BOLT (b)	BOLT DIA (mm) (D)	BOLT TYPE-HILTI	INJECTION MORTAR - HILTI	BOLT DIMENSIONS			MAXIMUM DIAMETER OF THE CLEARANCE HOLE IN THE FIXTURE df (mm)
				EMBEDMENT LENGTH BELOW TOC (h0=hef) (mm)	BOLT PROJECTION ABOVE TOC 'P' (mm)	BOLT LENGTH L0(a) (mm)	
M16	16	HAS-U 8.8 - HDG	HIT-HY-200-A	100	90	190	18
M20	20	HAS-U 8.8 - HDG	HIT-HY-200-A	165	95	260	22
M24	24	HAS-U 8.8 - HDG	HIT-HY-200-A	200	100	300	26

- BOLT LENGTHS (L0) ARE STANDARD UNLESS OTHERWISE NOTED ON CONCRETE DETAIL DRAWINGS
BOLT PROJECTION, P = GROUT THICKNESS + PLATE THICKNESS + t.
- PROVIDE 2 NUTS AND 1 WASHER FOR ANCHOR BOLTS SUBJECTED TO UPLIFT OR VIBRATION WHERE NOTED ON DESIGN DRAWINGS.
- t = 1.5 x D for 1 NUT AND WASHER AND FOR 1 LOCK NUT, AN ADDITIONAL NUT HEIGHT OF 13mm, 16mm AND 19mm HAS BEEN CONSIDERED FOR M16, M20 AND M24.
- BOLT PROJECTION IS SUITABLE FOR 25 MM THK GROUT + 25 MM THK PLATE + t (INCLUDING LOCK NUT).



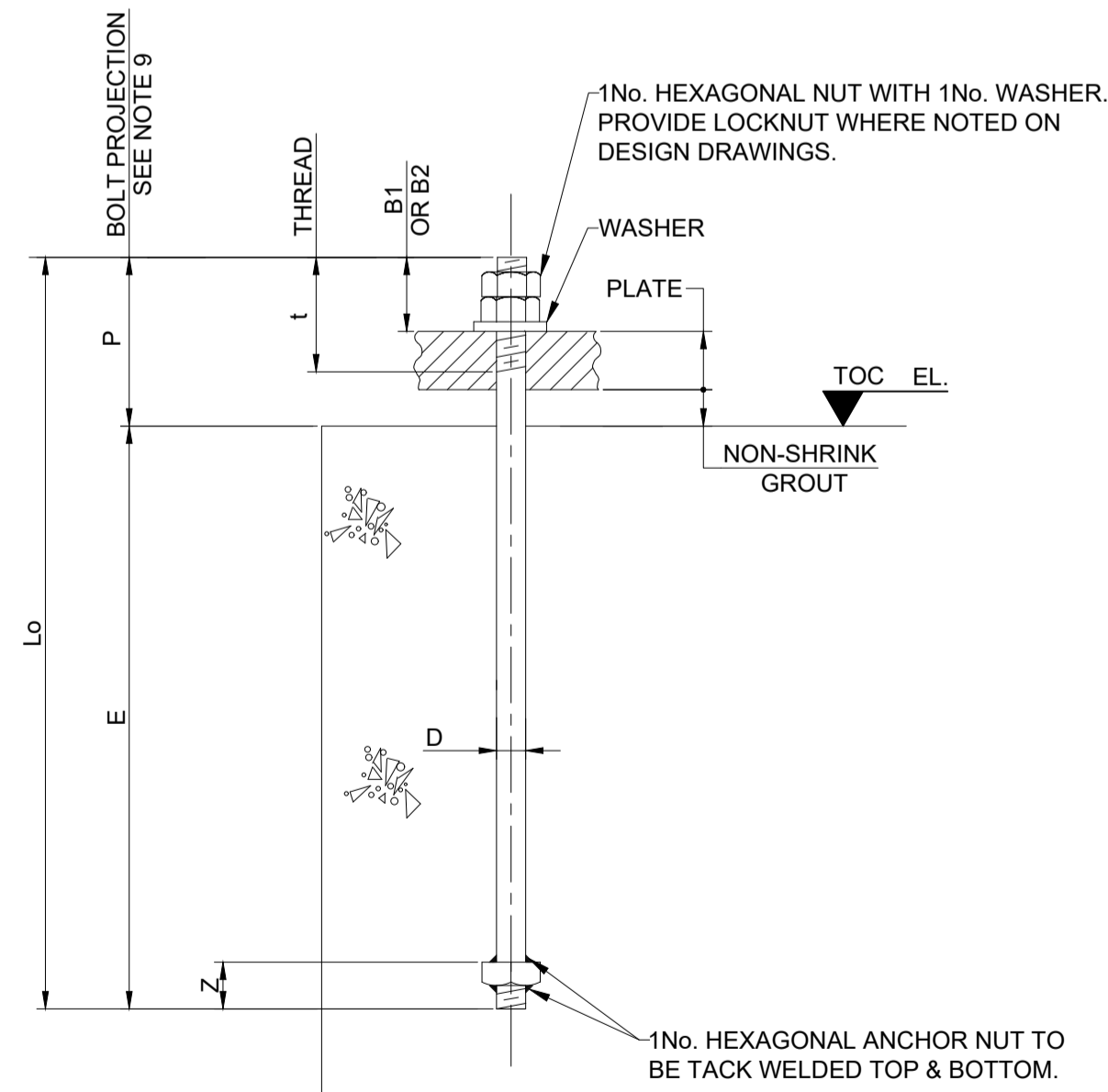
TYPE 1A

BOLT TYPE 1A	BOLT DIMENSIONS								ANCHOR PLATE DIMENSIONS	
	BOLT DIA (mm) (D)	EMBEDMENT (E)	BOLT LENGTH (Lo) (*)	THREAD (Z)	(t)	(B1) 1 NUT	(B2) 1 NUT & 1 LOCK NUT	MAX BASE PLATE THICKNESS (mm)	(W)	(T)
M16	16	350	450	25	80	25	40	20	60	20
M20	20	400	525	30	90	30	50	25	65	20
M24	24	450	600	35	115	35	60	30	70	20
M30	30	575	725	45	120	40	65	35	85	25
M36	36	650	825	55	140	50	80	40	105	25
M42	42	750	925	65	145	60	95	40	140	30

(*) BOLT LENGTHS (Lo) ARE STANDARD UNLESS OTHERWISE NOTED ON CONCRETE DETAIL DRAWINGS

BOLT PROJECTION = GROUT THICKNESS + PLATE THICKNESS + B1 or B2 (SEE NOTE 9)

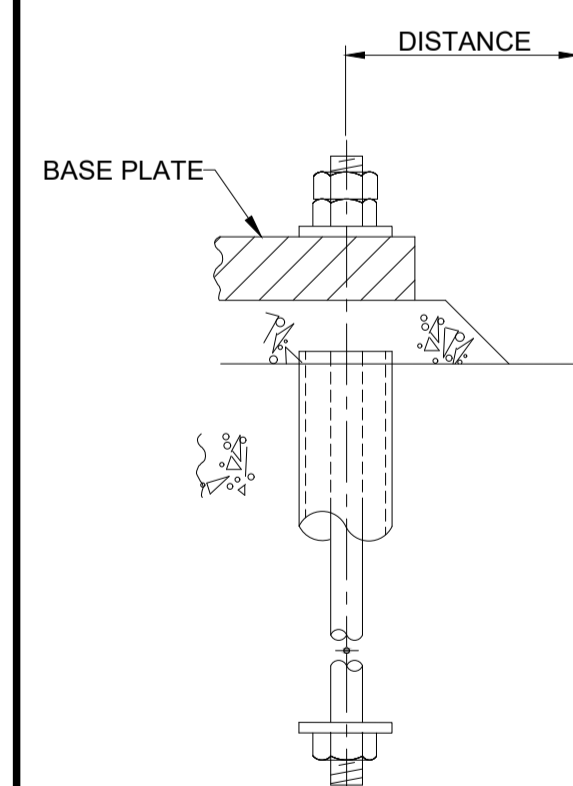
BOLT LENGTH (Lo) AND THREAD (t) ARE SUITABLE FOR GROUT THICKNESS UPTO 40mm



TYPE 2A

BOLT TYPE 2A (**)	BOLT DIMENSIONS								ANCHOR PLATE DIMENSIONS	
	BOLT DIA (mm) (D)	EMBEDMENT (E)	BOLT LENGTH (Lo) (Z)	THREAD (t)	(B1) 1 NUT	(B2) 1 NUT & 1 LOCK NUT	MAX BASE PLATE THICKNESS (mm)	(W)	(T)	
M12	12	275	375	25	75	20	35	20	-	-
M16	16	275	400	25	90	25	40	20	-	-

(**) TYPE 2 HOLDING DOWN BOLTS SHALL BE USED FOR STRUCTURES AND EQUIPMENT NOT SUBJECT TO SIGNIFICANT TENSION LOADS
BOLT LENGTH (Lo) AND THREAD (t) ARE SUITABLE FOR GROUT THICKNESS UPTO 40mm

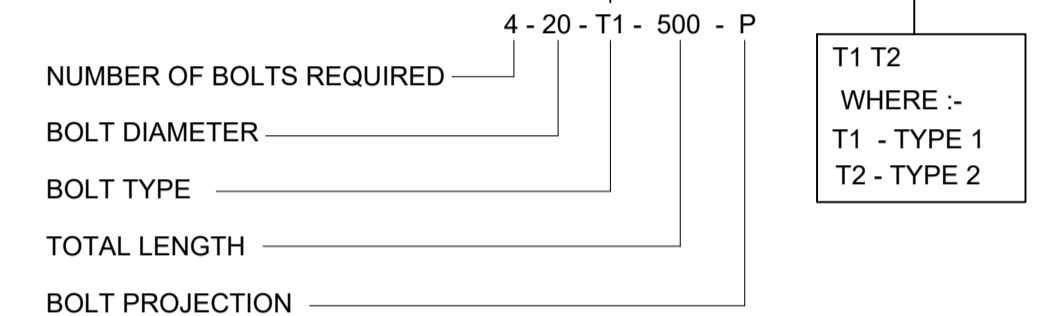


MINIMUM EDGE DISTANCE

THE MIN. DISTANCE FROM THE EDGE OF THE FOUNDATION TO THE CENTER LINE OF THE BOLT SHALL BE AS FOLLOWS :
UP TO INCLUDING : 12mm DIA = 120mm
16mm DIA = 120mm
20mm DIA = 120mm
24mm DIA = 150mm
30mm DIA = 180mm
36mm DIA = 220mm
42mm DIA = 260mm

A MINIMUM EDGE DISTANCE OF 150mm IS REQUIRED FOR VIBRATING EQUIPMENT / MACHINERY FOUNDATIONS.

- NOTES:**
- FOR CONCRETE GENERAL NOTES, ABBREVIATIONS & LEGEND SEE DRAWING NO UT-MID-60-WPR2-231500.
 - REFER TO ONSHORE STRUCTURAL STEEL FABRICATION & ERECTION SPECIFICATION UT-MID-60-WPR2-230007.
 - REFER TO ONSHORE REINFORCED CONCRETE SPECIFICATION UT-MID-60-WPR2-230006.
 - ALL BOLTS, NUTS, WASHERS, AND PLATES SHALL BE IN ACCORDANCE WITH STRUCTURAL STEEL FABRICATION & ERECTION SPECIFICATION UT-MID-60-WPR2-230007 AND STEELWORK GENERAL NOTES UT-MID-60-WPR2-231561.
 - ALL BOLTS SHALL BE HELD FIRM IN POSITION DURING CONCRETE PLACEMENT BY MEANS OF AN ADEQUATE TEMPLATE. PLEASE MAKE SURE PROPER TEMPLATE CAGE SHALL BE USED. SLEEVES/PLUGS SHALL BE MAINTAINED CENTRALLY AROUND BOLT BY FIXING TO TEMPLATE.
 - NO CONCRETE SHALL BE POURED, UNTIL ALL BOLTS HAVE BEEN CHECKED FOR TRUE ELEVATION AND VERTICAL ALIGNMENT. FOR TOLERANCES REFER TO ONSHORE REINFORCED CONCRETE SPECIFICATION UT-MID-60-WPR2-230006.
 - PLUGS & INSERTS SHALL BE COMPLETELY REMOVED, AND POCKETS THOROUGHLY CLEARED PRIOR TO GROUTING.
 - THE EXPOSED THREAD AND NUT OF THE ANCHOR BOLTS SHALL BE WRAPPED IN 'DENZO' OR OTHER APPROVED PROTECTIVE TAPE. THIS TAPE SHALL BE MAINTAINED INTACT UNTIL THE EQUIPMENT OR STRUCTURE IS PLACED IN POSITION. BOLT SLEEVES AND POCKETS SHALL BE CLEARED OUT PRIOR TO LOCATION OF EQUIPMENT AND SUBSEQUENT GROUTING.
 - FOR ACTUAL BOLT PROJECTION, SEE RELEVANT FOUNDATION DESIGN DRAWINGS.
 - ALL GROUTING SURFACES SHALL BE FREE FROM GREASE OR OTHER CONTAMINANTS AFFECTING THE BOND STRENGTH.
 - ANCHOR BOLTS SHALL NOT BE LESS THAN M20 FOR MAIN STRUCTURES AND EQUIPMENT.
 - REINFORCEMENT SHALL NOT BE CUT TO ALLOW INSTALLATION OF ANCHOR BOLTS. RELOCATION OF REINFORCEMENT SHALL BE TO THE ENGINEERS APPROVAL.
 - ALL ANCHOR BOLTS SHALL BE TIGHTENED TO THE SNUG TIGHT CONDITION AS A MINIMUM.
 - THE FOUNDATION BOLT DESIGNATION SHALL BE INDICATED AS FOLLOWS:-



NOTE: ONE NUT AND ONE WASHER SUPPLIED WITH EACH BOLT, EXCEPT BOLTS SUPPLIED WITH TWO NUTS WHICH WILL BE INDICATED IN THE FOUNDATION DRAWINGS.

- REFER TO TYPICAL BASE PLATE DRAWING UT-MID-60-WPR2-231573 FOR BASE PLATE DETAILS AND ANCHOR BOLT SPACING.
- ALL ANCHOR BOLTS, NUTS & WASHERS SHALL BE HOT DIPPED SPUN GALVANIZED IN ACCORDANCE WITH PROJECT SPECIFICATIONS.
- UNLESS SPECIFIED OTHERWISE ON DRAWINGS, ALL POST-DRILLED ANCHOR BOLTS SHALL BE HILTI HAS-U 8.8 (HDG) THREADED ROD WITH HIT-HY 200-A INJECTION MORTAR SYSTEM (OR EQUIVALENT APPROVAL).
- POST - DRILLED ANCHORS SHALL BE INSTALLED IN STRICT ACCORDANCE WITH MANUFACTURER'S INSTALLATION INSTRUCTIONS AND RECOMMENDATIONS.
- THE ENGINEER IS RESPONSIBLE FOR ASSESSING THE CONNECTION FOR THE APPLIED LOADS WHEN SPECIFYING A DETAIL, WITH A BESPOKE DETAIL TO BE USED IN SITUATIONS WHERE THE TYPICAL DETAIL IS NOT SUITABLE.
- UNLESS SPECIFIED OTHERWISE ON DRAWINGS, ALL ANCHOR BOLTS SHALL BE GRADE 8.8.
- FOR BASE PLATE AND GROUT THICKNESS, OTHER THAN THOSE INDICATED, CHECK THAT PROJECTION & THREAD LENGTH ARE SUFFICIENT.

01	24-MAY-23	AFC	ACCEPTED FOR CONSTRUCTION	DKR	SPI	SSG
00	12-JAN-22	IFR	ISSUED FOR REVIEW	NME	CWS	SSG
Rev.	Date	Step	Revision Description	Iss.	Check.	Appr.

EACOP Project **Worley**
energy | chemicals | resources

This document is the property of the COMPANY and it shall not be disclosed to third parties or reproduced without the express written permission of the COMPANY.
This document has been generated by an Electronic Document Management System. When printed it shall be considered as "for information only". The controlled copy is the EDMS version and it is document holder's responsibility to make sure that latest version is in use.

Affiliate: Site: MID Project Phase: DE

TYPICAL DRAWING
CONCRETE ANCHOR BOLT DETAILS

Discipline:	CIV	Doc. Type:	TYP	Sector:	60	System:	N/A
Company Doc. N°:	UT-MID-60-WPR2-231501	Class:	2	Scale:	NTS		
Contractor Doc. N°:		Format:	A1	Folio:	1 of 1		